

Sri Lanka

The resplendent isle



Sri Lanka has long attracted visitors to its shores. Arab traders, who came to trade for cinnamon, nutmeg, cloves and vanilla more than five centuries ago, called the place 'Serendib' – from which comes 'serendipity', the faculty of making happy and unexpected discoveries.

Modern travellers tend to view Sri Lanka in the same way. It may be a small island, but it offers a staggering variety of lovely landscapes, intriguing cuisines, colourful festivals, colonial history and indigenous culture. From the tropical beaches of the coast, the land rises to the cool 2,500-metre central massif. The warm, friendly

people that inhabit this fertile land are the inheritors of an ancient heritage – civilisations that built the rock fortress of Sigiriya, the palaces of Anuradhapura and Kandy's Temple of the Tooth have flourished here for nearly three millennia.

The gateway to the island is Colombo. For centuries a thriving spice port it was taken by the Portuguese in the early 16th century, by the Dutch in the mid 17th and finally by the British some 200 years ago. Today, their architectural imprint – churches with ornate Iberian façades,

massive Dutch forts and assorted examples of British colonial style blend satisfactorily with the city's modern development.

Sightseeing

There is an extraordinary range of things to see and do in Sri Lanka, from the imposing colonial buildings, museums and art galleries in the capital to spectacular waterfalls and undulating tea plantations around Nuwara Eliya, from richly-decorated temples to botanical gardens of unbelievable beauty.

In the capital there is Colombo National Museum, a beautiful Victorian building housing a superb collection of exhibits; Dehiwala Zoo – where animals are free to romp in their natural surroundings; Pettah, a lively district of bazaars, street markets, temples and mosques; Kelaniya Raja Maha Vihare Temple – more than 2,000 years old and built on a site said to have been visited by the Buddha.

Outside Colombo is a whole range of uniquely Sri Lankan sights including: Kandy – the last stronghold of the Sinhalese kings; Sigiriya – a granite mountain that rises abruptly 200 metres above the jungle and contains magnificent 1,500-year old frescoes; Nuwara Eliya – a 2,000-metre high hill station at the heart of the tea growing area; and Peradeniya Botanic Gardens' superb collection of trees and shrubs in beautifully landscaped surroundings.

Accommodation

Luxury beach resorts, modern city centre hotels, colonial hotels in the hill country and jungle lodges.



Polonnaruwa

Events

Kandy Esala Perahera Festival (July – August); Duruthu Perahera Festival (January).

Honeymoon

Where better than on a languid Sri Lankan beach?

Family activities

Apart from the attractions of the beaches there are elephant sanctuaries, wildlife reserves, tea factories and cultural sites.

Shopping

What you can buy – Exquisite embroidery and lace, intricate batiks, finely carved woodwork, silverware and filigree, brassware, Kandyan dancer masks and a wide range of leather goods. Sri Lanka is famous for its gemstones. Every gem should be accompanied by a certificate of authenticity – beware of the street hawkers with cut glass replicas. Tea is one of the country’s finest products and may be bought at the tea factories in the hills.

Where you can buy – Popular shopping areas in Colombo are Old Fort, Galle Road, the Colombo 7 district, Racecourse Avenue, York Street, the Port and Green Path. There are also many street markets – Pettah Bazaar being the best-known as well as modern shopping malls; elsewhere there are local bazaars and souvenir shops in hotels and popular tourist destinations.

Entertainment

Sri Lankans are a fun-loving people demonstrated by the many night spots in Colombo, frequent performances of traditional music and dance, casinos and restaurants.

Sports and leisure

Water sports (including scuba diving, snorkelling, windsurfing, water-skiing and canoeing), fishing, golf and trekking.



● Landmarks ▲ Places of interest H HOTELS

Average climate in Sri Lanka		J	F	M	A	M	J	J	A	S	O	N	D
🌡️	MAX °C	30	31	31	31	31	29	29	29	29	29	29	29
	MIN °C	22	22	23	24	26	25	25	25	25	24	23	22
☀️	HRS	8	9	8	7	6	5	6	6	6	7	6	8
☁️	MM	90	70	148	230	370	224	135	110	160	347	315	147

Daily maximum and minimum averages are guides only and may vary.

Serendib Explorer

6 days/5 nights • Chauffeur-driven private car tour



Dambulla • Kandy • Nuwara Eliya • Colombo

- Lion Rock Fortress of Sigiriya and its 1,500-year-old frescoes
- Dambulla cave temples
- Kandy, the ancient stronghold of the Sinhalese kings
- Visit the elephant orphanage

This exciting journey enables you to explore the history, culture and extraordinary natural beauty of Sri Lanka. Taking you from the coast high into the mountains, you will see Sri Lanka's ancient capitals; lovely Kandy, the capital from 1590 to 1815, which is set on the Mahaweli River and site of the Temple of the Tooth; pretty Nuwara Eliya, also known as 'Little England' for its colonial architecture, set 3,000 feet above sea level; and Colombo, the busy capital, where you may shop for souvenirs.

Day 1: Colombo – Dambulla (130 kilometres)

Arrive at Colombo's Bandaranayake International Airport and transfer to your hotel in Dambulla. Visit the cave temples and overnight at Dambulla.

Day 2: Dambulla

Visit Sigiriya to see the famous rock frescoes. Later you may wish to visit Polonnaruwa, the 12th century capital. Overnight in Dambulla.

Day 3: Dambulla – Kandy (72 kilometres)

En route visit the elephant orphanage at Pinnawela. In Kandy, see the

Temple of the Tooth, the Royal Palace and the magnificent Peradeniya Botanical Gardens. Overnight in Kandy.

Day 4: Kandy – Nuwara Eliya (78 kilometres)

Drive to Nuwara Eliya, viewing the waterfalls en route. Visit a tea factory and stay overnight in Nuwara Eliya.

Day 5: Nuwara Eliya – Colombo (180 kilometres)

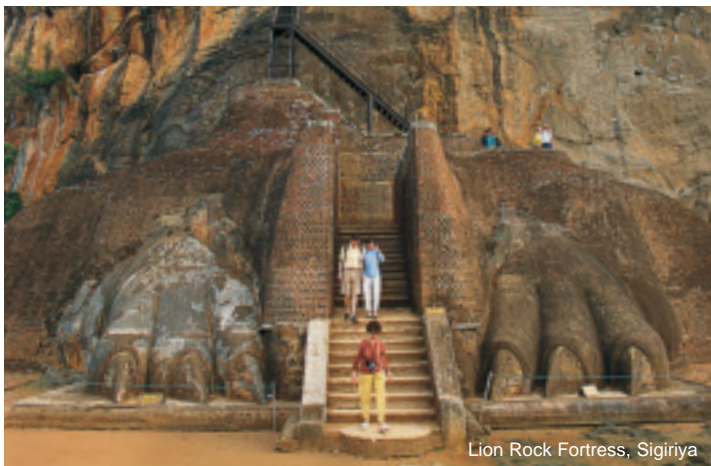
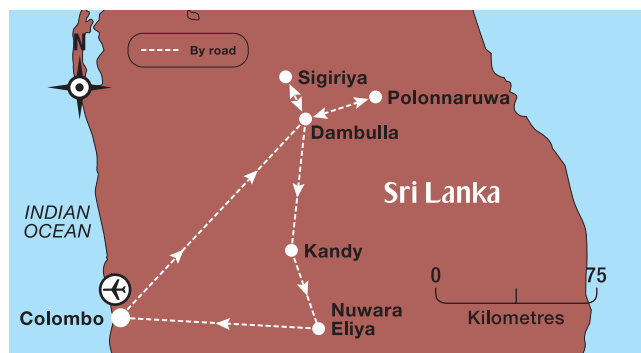
Drive through splendid scenery to Colombo. The evening is free to explore the city. Overnight in Colombo.

Day 6: Colombo

Transfer to Bandaranayake International Airport for your return flight. Depending on the time of your flight, there may be opportunities for additional sightseeing or shopping.

TAILOR-MADE

Total distance: 460 kilometres.



Lion Rock Fortress, Sigiriya

Tour available as:

- Chauffeur-drive – Includes car, driver and pre-booked accommodation, with a choice of three to four, or four to five star hotels.
- Tailor-made option.

Why not extend your stay in Sri Lanka to enjoy a couple of days relaxing on the beach.



Images of Sri Lanka

7 days/6 nights • Chauffeur-driven private car tour

Kandy • Nuwara Eliya • Yala • Beruwela/Bentota • Colombo

- Kandy – quaint, historical city
- Tea plantations of Nuwara Eliya
- Yala – wildlife sanctuary

For those who want to experience Sri Lanka in its entirety – this is an ideal tour. We take you to the hill country of Kandy and Nuwara Eliya, an inland region 450 to 2,400 metres above sea level. Stop at the wildlife sanctuary in Yala and laze on the beach at Beruwela.

Day 1: Colombo – Kandy (116 kilometres)

Arrive at Colombo’s Bandaranayake International Airport and transfer to your hotel in Kandy. Discover the botanical gardens of Peradeniya, visit a gem factory, a handicraft centre and a batik factory. Later visit the Temple of the Tooth of Lord Buddha and return to the hotel after enjoying a traditional cultural show. Overnight in Kandy.

Day 2: Kandy – Nuwara Eliya (77 kilometres)

Embark on a scenic mountain route through Nuwara Eliya and visit a tea factory. Overnight in Nuwara Eliya.

Day 3: Nuwara Eliya – Yala (192 kilometres)

Depart to Yala National Park, the largest wildlife sanctuary on the island, where you will have an opportunity to encounter some of the wild animals in their natural environment. Overnight in Yala.

Day 4: Yala – Beruwela/Bentota (250 kilometres)

After breakfast, leave for Beruwela/Bentota, the stretch of beach which has seen immense resort developments in the past few years. Overnight in Beruwela/Bentota.

Day 5: Beruwela/Bentota

The day is at leisure to relax and laze on the beach. Overnight in Beruwela/Bentota.

Day 6: Beruwela/Bentota – Colombo (55 kilometres)

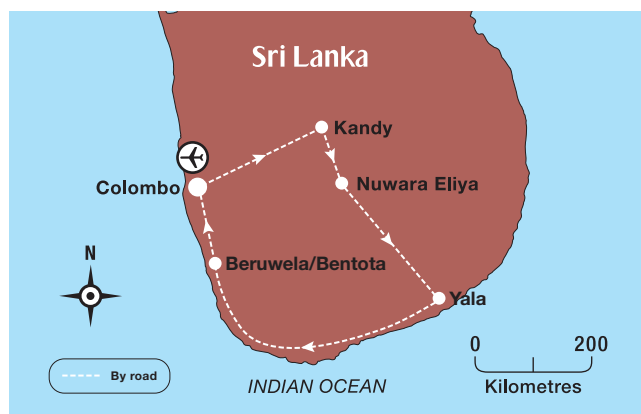
Depart for Colombo. Before you check-in at your hotel complete your trip with a city tour of Colombo. Overnight in Colombo.

Day 7: Colombo

Transfer to Colombo’s Bandaranayake International Airport for your return flight.

Total distance: 734 kilometres.

TAILOR-MADE



Bentota

Tour available as:

- Chauffeur-drive – Includes car, driver and pre-booked accommodation, with a choice of hotels.
- Tailor-made option.

Note: Optional day excursions can be added to the itinerary.



Boutique Resorts and Villas

Perfect tropical holidays

Often called the Isle of Serendipity, Sri Lanka is fast gaining a well-deserved reputation for its exotic boutique resorts and villas. Blending traditional and colonial architecture with the most modern amenities, these small and secluded hideaways provide a singular experience of style and exceptional service. With a distinctive flavour created by unique natural surroundings, each boutique resort or villa offers guests total privacy to enjoy the privileges of a pampered lifestyle while also giving them an in-depth experience of local culture and history.



With a whole range of activities and amenities including internet access, deluxe spas featuring ayurvedic treatments, private pools and beaches, water sports, art and craft sessions as well as the finest local and international cuisine prepared by master chefs, vacationers can look forward to a truly distinctive and memorable holiday.

Reef Villas



Location: Wadduwa.

Reef Villas is a truly spectacular and luxurious villa, set in the heart of three acres of exotic tropical gardens with palm fringed pavilions and reflection pools that create the romance and grandeur of Sri Lanka.



Reef Villas has an intimate ambience, impeccable attention to detail and a stunning array of activities for all. With the shimmering Indian Ocean as its backdrop, this idyllic beach resort offers you privacy and intimacy to relax and explore. Bandaranayake International Airport is 65 kilometres away.

Facilities: Seven suites, restaurant, bar, 24-hour room service, library, safety deposit boxes and non-smoking rooms.

Suites: All rooms have private balconies and verandahs. Air-conditioning, hairdryer, bathrobes, TV, DVD, CD, wireless connectivity, personalised minibar, tea and coffee and safe.

Sports and leisure: Outdoor pool, jacuzzi, spa, tennis court, indoor games room and table tennis.

Check-in: 1400 hours/**Check-out:** 1200 hours.



Suite



Aditya



Location: Galle.

One of the most romantic places to stay in Sri Lanka, Aditya is a contemporary all-suite boutique hotel located on a secluded stretch of beach near Galle. Whilst the hotel is beautifully spacious, it maintains an intimate atmosphere through creative and modern design. Bandaranayake International Airport is 160 kilometres away.

Facilities: 12 suites, restaurant, bar, 24-hour room service, library, safety deposit boxes and non-smoking rooms.

Suites: All rooms have private balconies and verandahs and a private plunge pool. Air-conditioning, hairdryer, bathrobes, LCD TV, DVD, CD, wireless connectivity, minibar, tea and coffee and safe.

Sports and leisure: Outdoor pool, fitness centre, jacuzzi, spa, tennis court, indoor games room and table tennis.

Check-in: 1400 hours

Check-out: 1200 hours.



Suite



The Fortress

Location: Galle.

This hotel is fashioned in the style of a powerful fortress, rising next to the beach. The resort's walls enclose verdant gardens sheltering hammocks, daybeds and stunning water features. The resorts architecture forges historic Dutch and Portuguese styles with the motifs of Sri Lanka. Bandaranayake International Airport is 155 kilometres away.

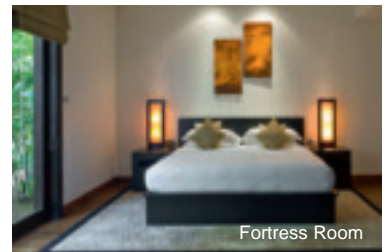
Facilities: 49 rooms and suites. Restaurant, bar, 24-hour room service, library, safety deposit boxes and non-smoking rooms.

Fortress Rooms: All rooms have private balconies. Air-conditioning, hairdryer, bathrobes, LCD TV, DVD, CD, wireless connectivity, minibar, tea and coffee and safe.

Sports and leisure: Outdoor pool, children's activities, children's play area, fitness centre, yoga pavilion, jacuzzi, spa, tennis court, indoor games room and table tennis.

Check-in: 1400 hours

Check-out: 1200 hours.



Fortress Room

Elephant Corridor



Location: Sigiriya.

Constructed on an elephant corridor between Minneyiya National Park and Sigiriya National Park, the Elephant Corridor hotel captures the essence of nature, history and wildlife. Built with minimal disruption to the eco system, wild elephants find it natural to walk up to the hotel lobby or through the pathways of the hotel. Bandaranayake International Airport is 175 kilometres away.

Facilities: 21 suites, restaurant, bar, 24-hour room service, library, safety deposit boxes and non-smoking rooms.

Suites: All suites have private balconies and private plunge pools. Air-conditioning, hairdryer, bathrobes, LCD TV, DVD, CD, wireless connectivity, minibar, tea and coffee and safe.

Sports and leisure: Outdoor pool, fitness centre, yoga pavilion, jacuzzi, spa, indoor games room and elephant rides.

Check-in: 1400 hours

Check-out: 1200 hours.



Romantic Suite





Fort area

Colombo

Sri Lanka's captivating capital

A large natural harbour and strategic location made Colombo a thriving spice port on ancient sea trade routes. It was first settled in by Arab traders in the 8th century AD, subsequently by Portuguese, Dutch and British colonists. Modern Colombo, which is the administrative capital of Sri Lanka, has an interesting blend of modern buildings and colonial architecture, numerous parks, playing fields and idyllic beaches.

Places of interest: The **historic fort** and harbour areas; the Old Parliament House; Buddhist temples; Churches; Hindu Temples; Mosques; the National Museum; Independence Hall; Bandaranaike Memorial International Conference Hall; and the Dutch House Museum, a restored mansion dating back to the 17th century displaying the life and times of the Dutch occupation.

Best buys: Handicrafts from the fort area and Galle Road; batiks and wall-hangings from **Pettah Bazaar**; clothing from Lipton Circle and fine China from **Galle Road** in Colpetty.

For the family: **Dehiwala Zoo**, where animals roam freely - highlight is the afternoon elephant show and the closest beach is at Mount Lavinia, a few kilometres south of the city centre.

Out and about: Galle Face Green, where locals enjoy games of cricket and fly kites or take evening strolls watching the sunset.

Sporting attractions: Major stadiums offer a variety of sports.



Cinnamon Grand Colombo



Location: Business district.

Surrounded by 10 acres of lush landscaped gardens, the hotel is conveniently situated in the heart of the city. The Cinnamon Grand is the only Colombo hotel which has a three-storey shopping mall, the Crescat Boulevard, with over 75 deluxe shops, supermarkets, food courts serving a wide variety of international and local cuisine and an underground car park. Bandaranayake International Airport is 37 kilometres away.

Elegantly-appointed rooms emphasise elegance, luxury and comfort. All corridors have double glass panels facing the atrium to maintain maximum privacy within each floor as per acoustic consultant study and recommendation.

Facilities: 501 rooms and suites. 10 restaurants, two bars, 24-hour room service, shops, hairdresser, safety deposit boxes, business centre, children's activities, children's play area, babysitting, interconnecting and non-smoking rooms. Suitable for the physically challenged.

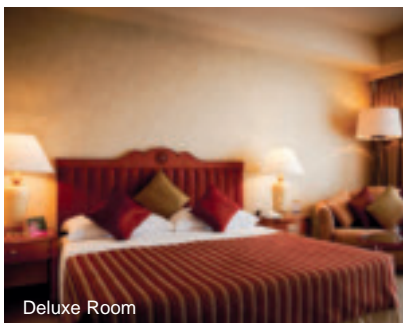
Deluxe Rooms: Air-conditioning, hairdryer, TV, data ports, minibar, tea and coffee, iron and safe.

Premium Rooms: Additionally these rooms are larger and located in the Premium Wing. These rooms reflect contemporary elegance and style.

Sports and leisure: Outdoor pools, fitness centre, spa, sauna, jacuzzi, steam bath, massage, tennis courts, squash courts and billiards rooms.


Check-in: 1300 hours

Check-out: 1200 hours.



Deluxe Room



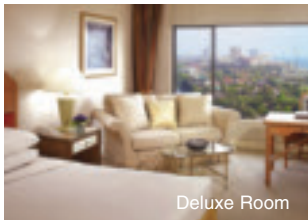
Hilton Colombo 

Location: Echelon Square Complex.
 Located in the prestigious business centre of Colombo, the hotel offers views of Beira Lake, the Indian Ocean, the city and harbour. Bandaranayake International Airport is 35 kilometres away.
Facilities: 384 rooms and suites. Six restaurants, two bars, colonial-style pub, 24-hour room service, beauty salon, safety deposit boxes, business centre and non-smoking rooms. Suitable for the physically challenged.
Deluxe Rooms: Air-conditioning, hairdryer, TV, data ports, minibar, tea and coffee and safe.

Executive Rooms: Additionally these rooms offer access to the Executive Floor lounge and 24-hour butler service.

Sports and leisure: Outdoor pool, fitness centre, spa, sauna, jacuzzi, steam bath, massage, floodlit tennis courts and squash court.

Check-in: 1400 hours
Check-out: 1200 hours.



Deluxe Room

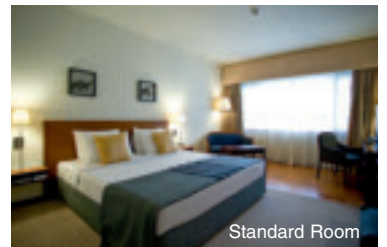


Cinnamon Lakeside Colombo 

Location: Colombo centre.
 Set in a beautiful garden landscape, the hotel offers views of Beira Lake, one of Colombo's landmarks and the Indian Ocean, and is the only resort-style hotel in the city. It is within walking distance of the commercial precinct and close to key shopping areas. Bandaranayake International Airport is 35 kilometres away.
Facilities: 340 rooms and suites. Six restaurants, two bars, 24-hour room service, nightclub, shopping arcade, hairdresser, beauty salon, safety deposit boxes, business centre, interconnecting and non-smoking rooms.
Standard Rooms: Air-conditioning, hairdryer, TV, data ports, minibar, tea and coffee and safe.

Sports and leisure: Outdoor pool, children's pool, fitness centre, health club, spa, sauna, jacuzzi, steam bath, massage, floodlit tennis courts and squash courts.

Check-in: 1200 hours
Check-out: 1200 hours.



Standard Room



Taj Samudra 

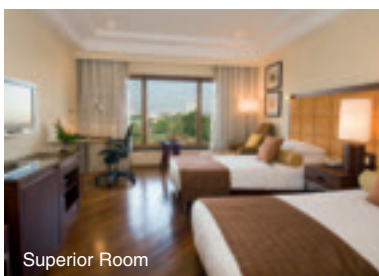
Location: City centre.
 This charming hotel welcomes you in style with soothing water fountains and an opulent lobby befitting Rajasthani royalty. Conveniently located close the city's business hub and a short stroll to the city centre for museums, restaurants and more. The hotel is located on 11 acres of gardens and overlooks the historic Galle Face Green. Bandaranayake International Airport is 35 kilometres away.
Facilities: 300 rooms and suites. Six restaurants, two bars, 24-hour room service, beauty salon, safety deposit boxes, business centre

and non-smoking rooms. Suitable for the physically challenged.

Superior Rooms: Air-conditioning, hairdryer, TV, data ports, minibar, tea and coffee and safe.

Sports and leisure: Outdoor pool, fitness centre, spa, sauna, jacuzzi, steam bath and massage.

Check-in: 1400 hours
Check-out: 1200 hours.



Superior Room





Sigiriya, Kandy and Nuwara Eliya

Heart of Sri Lanka

Sigiriya

The Lion Fortress

Sigiriya, the Lion Fortress is a unique piece of advanced architecture that

converted a huge boulder rock into a castle amidst a walled and moated city.

Kandy

Hill capital of Sri Lanka

Kandy, the last stronghold of the Sinhalese kings, is an attractive town set about a vast artificial lake and surrounded by hills.

Nuwara Eliya

Little England

Attracted by the cool climate, Nuwara Eliya was established by the British, who set about recreating a little piece of England.

Places of interest: Nuwara Eliya – Horton

Plains; World's End; Lake Gregory; Pidurutalagala; Adam's Peak; Tea factories.

Sigiriya – Sigiriya rock fortress.

Kandy – The Dalada Maligawa (the Temple of Tooth of Lord Buddha); Kiri Muhuda; the old Royal Palace; Pinnawela elephant orphanage.

Temple of Tooth



Heritage Kandalama ✓✓✓✓

Location: Dambulla.

Lying on the southern edge of the cultural triangle and away from the bustling city, this eco-friendly hideaway, is built within a cliff and overlooks Kandalama Lake. Bandaranayake International Airport is 170 kilometres away.

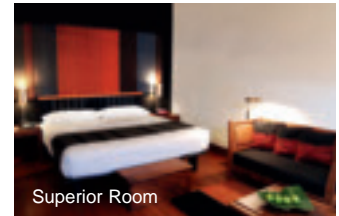
Facilities: 152 rooms and suites. Three restaurants, bar, 24-hour room service, shops, safety deposit boxes, business centre, library, children's play area and babysitting.

Superior Rooms: These rooms offer lake, forest or garden views and have a balcony. Air-conditioning, hairdryer, TV, wireless connectivity, minibar, tea and coffee and safe.

Sports and leisure: Outdoor pools, fitness centre, spa, tennis court, horse riding, jogging track, games room, birdwatching, trekking, cycling, elephant-back trekking, water polo, canoeing and lake safaris.

Check-in: 1200 hours

Check-out: 1200 hours.



Superior Room

Amaya Hills ✓✓✓✓

Location: Kandy.

Referred to as 'The Palace in the Hills', the architecture is designed to manifest the cultural heritage of Sri Lanka's last ancient kingdom of Kandy. This retreat is perched high on a hill and has easy access to cultural attractions such as the Kandy Perahera, the Botanical Gardens and Kandy City. Bandaranayake International Airport is 120 kilometres away.

Facilities: 100 rooms and suites. Two restaurants, bar and tea lounge, nightclub, 24-hour room service and nanny services.

Deluxe Rooms: All rooms have a picturesque view of the forested hills of Heerassagala. TV, minibar, tea and coffee and safe.

Sports and leisure: Outdoor pool, fitness room, ayurvedic centre, squash courts, billiards room, reading room, games room and nature trekking.

Check-in: 1400 hours

Check-out: 1200 hours.



Mahaweli Reach ✓✓✓

Location: Kandy.

Tucked away in Kandy, the lush green hill station of Sri Lanka, the Mahaweli Reach hotel will captivate your imagination as soon as you enter its elegant setting. The hotel acquired its name due to the location on the banks of Sri Lanka's longest river, the great Mahaweli. Bandaranayake International Airport is 130 kilometres away.

Facilities: 112 rooms and suites. Restaurant, bar, 24-hour room service, safety deposit boxes, business centre, babysitting, interconnecting and non-smoking rooms.

Deluxe Rooms: All rooms have private balconies. Air-conditioning, TV, minibar, tea and coffee and safe.

Sports and leisure: Outdoor pool, fitness room, Ayurvedic centre, billiards room, reading room and games room.

Check-in: 1400 hours

Check-out: 1200 hours.



Deluxe Room



Heritage Tea Factory ✓✓✓

Location: Kandapola, Nuwara Eliya.

The Heritage Tea Factory is situated in the midst of a tea plantation, a 45-minute drive away from Nuwara Eliya. This hotel began as a tea factory built in the days of the British Raj. It has been converted into a hotel but much of the original style is retained. Bandaranayake International Airport is approximately 192 kilometres away.

Facilities: 57 rooms, two restaurants, two bars, 24-hour room service, shops, business centre, library, children's play area and babysitting.

Standard Rooms: These rooms offer a garden and tea plantation view. Hairdryer, TV, minibar, tea and coffee.

Sports and leisure: Fitness room, spa, steam, massage and horse riding.

Check-in: 1200 hours

Check-out: 1200 hours.



Standard Room

Grand Hotel ✓✓✓



Location: Nuwara Eliya.

An elegant British colonial-style hotel which is over 100 years old, the Grand Hotel is located at the central hill station of Nuwara Eliya (little England). It was the former residence of the Governor of Ceylon and an excellent example of an Elizabethan era manor house. Bandaranayake International Airport is 180 kilometres away.

Facilities: 156 rooms and suites. Three restaurants, two bars, 24-hour room service, shops, safety deposit boxes, business centre, babysitting, interconnecting and non-smoking rooms.

Deluxe Rooms: All rooms have private balconies. Air-conditioning, hairdryer, TV, data ports, minibar, tea and coffee and safe.

Sports and leisure: Outdoor pool, fitness room, Ayurvedic centre, billiards room, reading room, games room, tennis courts and golf course.

Check-in: 1400 hours

Check-out: 1200 hours.



Deluxe Room





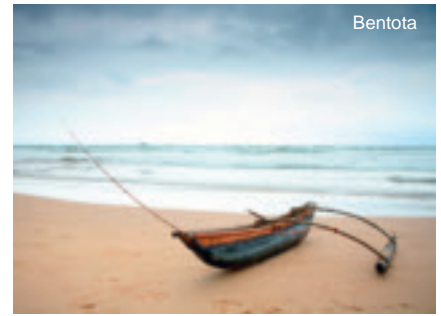
Old Dutch Fort, Galle

Bentota & Galle

Tropical paradise

Sri Lanka's West Coast has some of the finest resorts in the country on magnificent beaches and is host to a World Heritage site.

Bentota is the unofficial water sports capital of the island because aside from its rolling surf, it also has a river where beginners can gain experience before heading into the ocean. **Galle** – pronounced 'Gaul' – is remarkable due to its extensive maritime history, international trading links and colonial domination, which led to a diverse ethnic composition.



Bentota

Places of interest: **Bentota** – Wanawasa and Galapata temples. **Galle** – Fort, National Museum and Groote Kerk.

For the family: **Bentota** – Sea turtles project and river safaris. **Galle** – Historical Mansion Museum.

Best buys: **Bentota** – Wooden masks. **Galle** – Lace, ebony carvings, gems polishing, paintings and pottery.

Sporting attractions: **Bentota** – Water sports. **Galle** – Cricket and snorkelling.



Jetwing Lighthouse

Location: Dadella, Galle.

Located atop a hillock, this hotel overlooks the blue waters of the Indian Ocean. Inspired by the Dutch influence in Sri Lanka, it exudes history and class, offering guests exquisite cuisine and stunning location, making it the ultimate retreat for a tranquil experience.

Bandaranayake International Airport is 155 kilometres away.

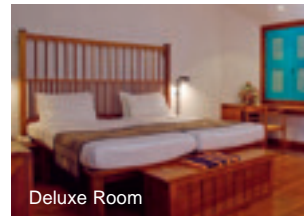
Facilities: 63 rooms and suites. Three restaurants, two bars, 24-hour room service, shopping arcade, hairdresser, beauty salon, safety deposit boxes, business centre, children's activities, babysitting and non-smoking rooms.

Deluxe Rooms: These rooms offer a sea view. Balcony, air-conditioning, hairdryer, bathrobe, TV, minibar, tea and coffee and safe.

Sports and leisure: Outdoor pools, children's pools, fitness room, spa, jacuzzi, steam bath, massage, tennis courts, squash court, table tennis and billiards room.

Check-in: 1500 hours

Check-out: 1200 hours.



Deluxe Room

Heritage Ahungalla



Location: Ahungalla.

A sapphire blue vista of water unfolds as you enter the Heritage Ahungalla, as the infinity pool blends with the endless expanse of the Indian Ocean. Visit the Kosgodra turtle hatchery or go on a river safari, step onto the pristine white beaches, or wade in the warm ocean shallows, there is something to please all travellers.

Bandaranayake International Airport is 115 kilometres away.

Facilities: 156 rooms and suites. Four restaurants, two bars, pool bar, nightclub, 24-hour room service, shops, library, safety deposit boxes, business centre, babysitting, interconnecting and non-smoking rooms.



Deluxe Room

Deluxe Rooms: All rooms have private balconies. Air-conditioning, hairdryer, TV, data ports, minibar, tea and coffee and safe.

Sports and leisure: Outdoor pool, fitness room, jacuzzi, spa, putting grid, tennis court, indoor games room, badminton court, table tennis and horse riding.

Check-in: 1400 hours

Check-out: 1200 hours.



The Blue Water Hotel ✓✓✓✓

Location: Wadduwa.

Offering spectacular views of the Indian Ocean, the hotel nestles among wild coconut groves and tall palms. Interior accents of blue water repeat throughout the hotel fringed by trees and perfect green lawns. A quiet ambience and privacy help indulging in the spacious rooms each with its own terrace or balcony. Bandaranayake International Airport is 62 kilometres away.

Facilities: 100 rooms, two restaurants, three bars, 24-hour room service, nightclub, shopping arcade, hairdresser, beauty salon, safety deposit boxes, business centre, babysitting, interconnecting rooms and non-smoking rooms.

Deluxe Rooms: Private balcony/terrace, air-conditioning, hairdryer, bathrobe, TV, data ports, minibar, refrigerator, tea and coffee and safe.

Sports and leisure: Outdoor pool and children's pool, fitness centre, spa, sauna, jacuzzi, steam bath, massage, tennis courts, squash courts, volleyball courts, badminton court.

Check-in: 1200 hours/**Check-out:** 1100 hours.



Deluxe Room



Mount Lavinia Hotel ✓✓✓✓

Location: Mount Lavinia.

Overlooking the Indian Ocean and 12 kilometres from Colombo, the hotel's colonial-style architecture creates a historical ambience. The Victorian era ambience, gourmet cuisine and exceptional service have made this luxury beach resort a preferred venue. Sun-bathed terraces, warm Sri Lankan hospitality and period décor rooms whisper the promise of a magical stay. Bandaranayake International Airport is 43 kilometres away.

Facilities: 275 rooms, three restaurants, three bars, 24-hour room service, nightclub, shopping arcade, beauty salon, safety deposit boxes, business centre, children's activities, babysitting, interconnecting and non-smoking rooms.

Bay Wing Rooms: Private balcony/terrace, air-conditioning, hairdryer, TV, data ports, minibar, tea and coffee and safe.

Sports and leisure: Outdoor pool, fitness room, spa, sauna, jacuzzi, massage and tennis courts.

Check-in: 1100 hours

Check-out: 1100 hours.



Bay Wing Room

The Palms Hotel ✓✓✓

Location: Beruwela.

This hotel is ideally located along the shores of the Indian Ocean. All rooms are well designed and each offers its own terrace or balcony and a panoramic view of the ocean. The hotel opens up to the magnificent white sandy beaches engulfed by the reef and surrounded by a canopy of greenery. Bandaranayake International Airport is 90 kilometres away.

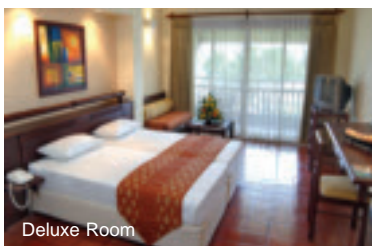
Facilities: 106 rooms, three restaurants, bar, limited hours of room service, shopping arcade, hairdresser, beauty salon, business centre, children's activities, babysitting, interconnecting and non-smoking rooms.

Deluxe Rooms: Private balcony/terrace, air-conditioning, hairdryer, TV, minibar, tea and coffee and safe.

Sports and leisure: Outdoor pool and children's pool, fitness centre, spa, massage and volleyball court.

Check-in: 1200 hours

Check-out: 1200 hours.



Deluxe Room

